

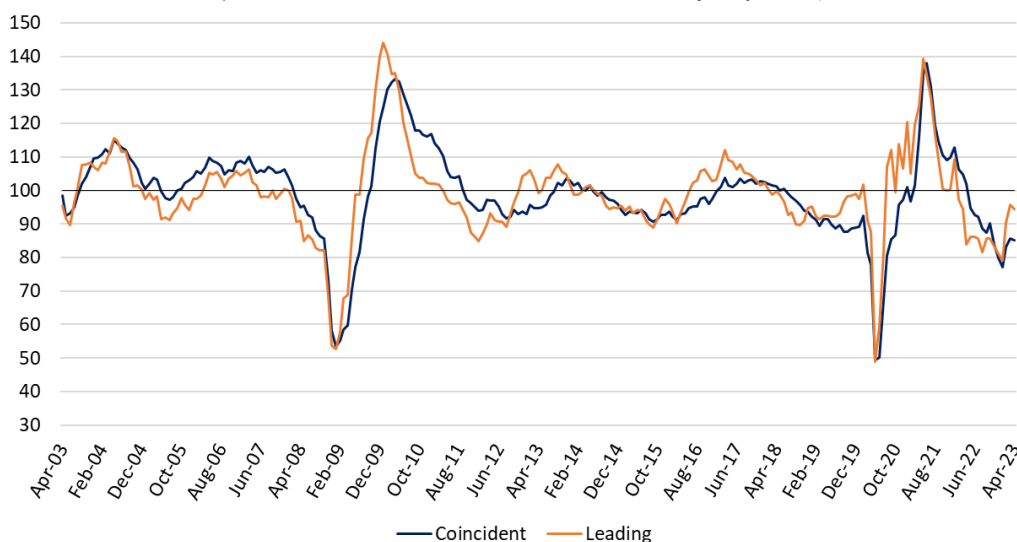
Press Release

Rio de Janeiro and Zurich, April 11, 2023, 10 am (local time) – 1 pm (UTC).

Global Barometers fall slightly after rising for two months

The levels of the Global Barometers remained almost unchanged in April, halting the recovery tendency observed earlier this year. The result was mainly influenced by the *Asia, Pacific & Africa* region, where the indicators retreated after two noticeably rises.

Global Economic Barometers: Coincident vs Leading
(Mean Jan/10 to Dec/19 =100, seasonally adjusted)



Source: KOF, ETH Zurich and FGV IBRE

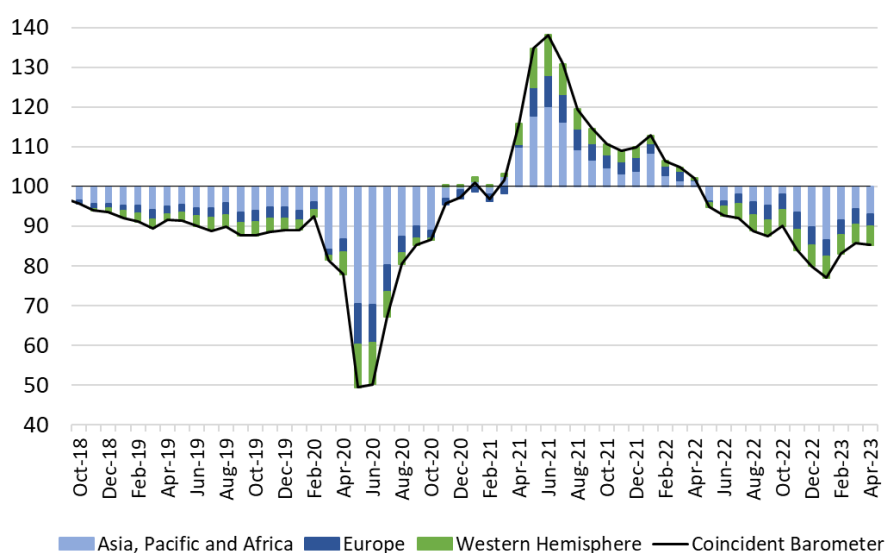
In April 2023, the Coincident Global Economic Barometer falls by 0.5 point to 85.2 points, and the Leading Global Economic Barometer drops by 1.1 point to 94.5 points. The stabilization is mainly due to the drop of the indicators in the *Asia, Pacific & Africa* region. There was also a decline in the *Western Hemisphere*, while *Europe* moved in the opposite direction.

“The results for the global barometers in April reflect the continuity of the main challenges on the world economic development, the worsening of geopolitical tensions and the resilience of the inflationary process. Although the most acute phase of supply problems as a result of health restrictions and armed conflict has been resolved for now, the disinflation process in the main world economies still demands restrictive policies, generating expectations of a slowdown in world economic activity in the coming months”, evaluates Paulo Picchetti, researcher of FGV IBRE.

Coincident Barometer – regions and sectors

In April, the *Asia, Pacific & Africa* region and the *Western Hemisphere* contribute -1.3 and -0.3 points, respectively, to the drop in the Coincident indicator, while *Europe* contributes positively with 1.1 points. The relative stability of the global indicator this month was partly motivated by the recent volatility of the indicators in China, which had been rising after the end of the zero-Covid policy. The graph below illustrates the contribution of each region to the deviation of the Coincident Barometer from its historical average of 100 points.

Regional Contributions to the Coincident Global Economic Barometer

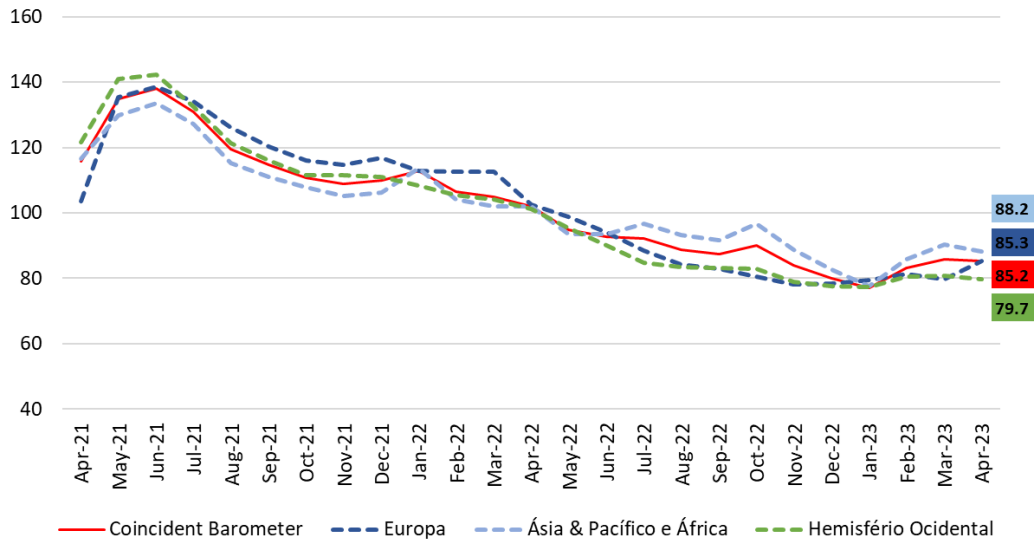


Source: KOF, ETH Zurich and FGV IBRE

Regional Contributions to Changes in the Coincident Barometer				
Period	Contributions per Regions			Monthly Variation
	Asia, Pacific and Africa	Europe	Western Hemisphere	Coincident Barometer
Worst pandemic moment: Cum. Contrib. Mar/20-May/20	-25.5	-8.4	-9.1	-43.0
Cum. Contrib. Jun/20-Apr/22	30.9	10.6	11.2	52.6
May-22	-5.2	-0.7	-1.5	-7.2
Jun-22	0.0	-0.9	-1.2	-2.2
Jul-22	1.9	-1.2	-1.3	-0.5
Aug-22	-2.1	-0.8	-0.3	-3.3
Sep-22	-0.9	-0.3	-0.1	-1.3
Oct-22	3.0	-0.5	0.0	2.6
Nov-22	-4.7	-0.4	-0.9	-6.1
Dec-22	-3.7	0.0	-0.4	-4.1
Jan-23	-3.3	0.3	0.1	-2.9
Feb-23	5.0	0.4	0.7	6.1
Mar-23	2.9	-0.3	0.1	2.6
Apr-23	-1.3	1.1	-0.3	-0.5
Cum. Contrib. Last 12 months	-8.4	-3.3	-5.1	-16.8
Cum. Contrib. Mar/20-Apr/23	-3.0	-1.1	-3.0	-7.2

Source: KOF, ETH Zurich and FGV IBRE

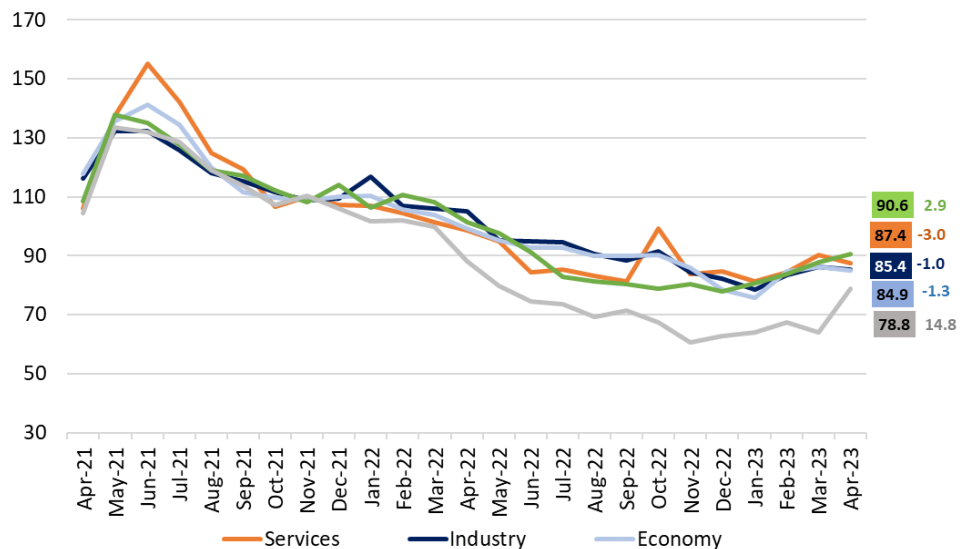
Coincident Global Barometers – Regions



Source: KOF, ETH Zurich and FGV IBRE

The Coincident sector indicators for *Services*, *Industry*, and the general state of the *Economy* (aggregated business and consumer evaluations) decrease this month, while *Construction* and *Trade* move in the opposite direction. The outstanding result of an increase of 14.8 points in the indicator for *Construction* markedly reduces the gap with the other sectors.

Coincident Global Barometers – Sectors

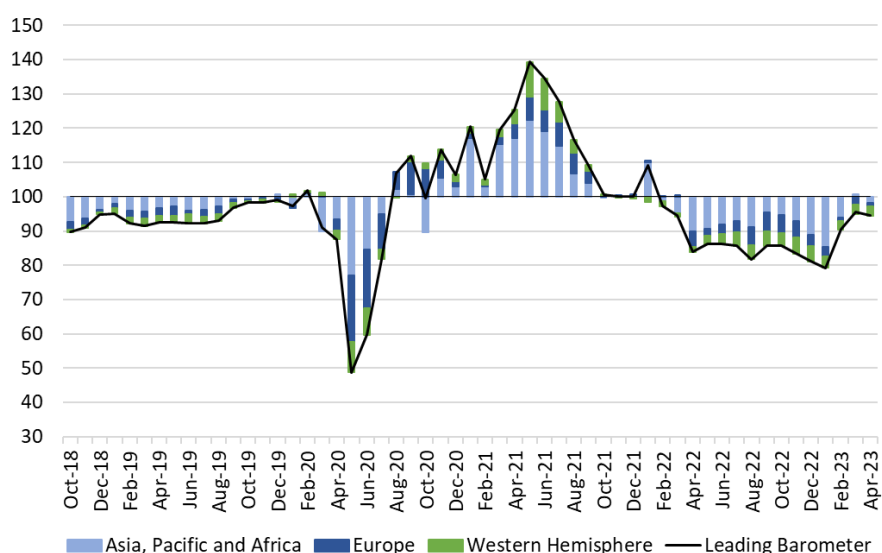


Source: KOF, ETH Zurich and FGV IBRE

Leading Barometer – regions and sectors

The Leading Global Barometer leads the world economic growth rate cycle by an average of three to six months. The regional results of the Leading indicator follow the same tendency as that of the Coincident Barometer, with the *Asia, Pacific & Africa* region and the *Western Hemisphere* contributing negatively with -2.3 points and -0.2 point, respectively, to the overall decline of 1.1 points, while *Europe* makes a positive contribution of 1.4 points.

Regional Contributions to the Leading Global Economic Barometer

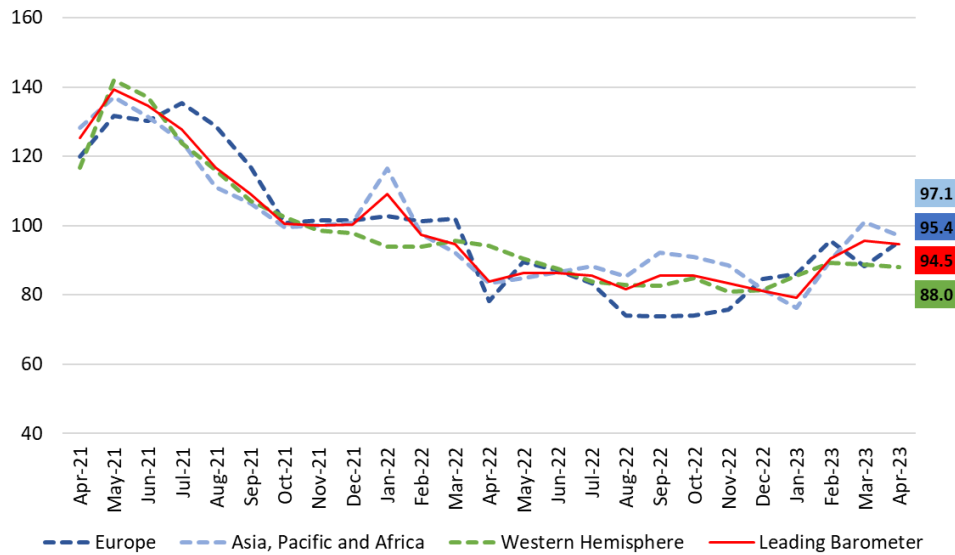


Source: KOF, ETH Zurich and FGV IBRE

Regional Contributions to Changes in the Leading Barometer				
Period	Contributions per Regions			Monthly Variation
	Asia, Pacific and Africa	Europe	Western Hemisphere	Leading Barometer
Worst pandemic moment: Cum. Contrib. Mar/20-May/20	-23.8	-19.9	-9.3	-53.0
Cum. Contrib. Jun/20-Apr/22	12.7	15.0	7.4	35.1
May-22	0.9	2.3	-0.9	2.3
Jun-22	1.2	-0.5	-0.7	0.0
Jul-22	1.1	-0.7	-0.9	-0.6
Aug-22	-1.9	-1.9	-0.2	-3.9
Sep-22	4.2	-0.1	-0.1	3.9
Oct-22	-0.7	0.1	0.5	0.0
Nov-22	-1.6	0.3	-0.9	-2.2
Dec-22	-4.2	1.8	0.1	-2.3
Jan-23	-3.4	0.4	1.1	-2.0
Feb-23	8.5	1.9	0.8	11.3
Mar-23	6.7	-1.5	-0.1	5.2
Apr-23	-2.3	1.4	-0.2	-1.1
Cum. Contrib. Last 12 months	8.5	3.5	-1.5	10.6
Cum. Contrib. Mar/20-Apr/23	-2.6	-1.4	-3.4	-7.3

Source: KOF, ETH Zurich and FGV IBRE

Leading Global Barometers – Regions

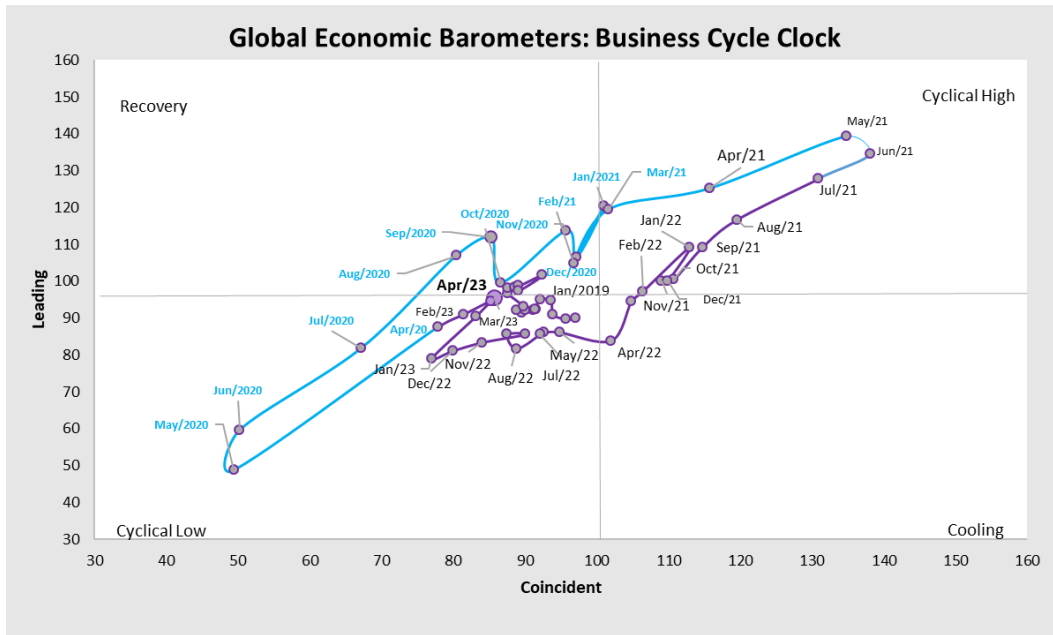


Source: KOF, ETH Zurich and FGV IBRE

All the Leading indicator sectors decrease in April, except *Construction*, which increases for the third month in a row, accumulating almost 13 points. Despite the increase, the sector continues at the lowest level among the five surveyed sectors.

Sectoral Leading Indicators					
Period	Construction	Economy	Industry	Trade	Services
Feb-20	97.6	102.4	101.0	104.2	105.5
Mar-20	103.6	81.4	91.4	103.4	102.3
Apr-20	90.4	84.1	92.8	70.9	83.3
May-20	59.7	62.6	49.8	50.2	29.1
Worst pandemic moment: Cum. Variation. Mar/20-May/20					
	-37.9	-39.8	-51.1	-54.0	-76.4
Cum. Variation Jun/20-Apr/22					
	30.3	21.0	32.3	46.1	63.8
May-22	95.6	79.5	86.4	95.3	100.1
Jun-22	87.7	86.1	87.1	85.9	87.2
Jul-22	79.2	87.0	87.9	78.0	84.5
Aug-22	75.5	84.0	83.4	84.0	77.4
Sep-22	81.5	90.3	86.1	83.9	80.9
Oct-22	89.8	82.9	88.9	78.8	82.8
Nov-22	86.1	84.2	85.2	79.7	79.0
Dec-22	75.3	77.3	85.2	79.6	82.1
Jan-23	73.3	81.4	79.7	76.2	84.0
Feb-23	75.6	89.9	93.6	85.2	90.4
Mar-23	79.3	99.4	95.9	96.2	96.1
Apr-23	86.2	98.7	95.0	91.5	89.6
Cum. Variation Last 12 months					
	-25.6	-12.0	-39.4	-24.8	-23.6
Cum. Variation Mar/20-Apr/23					
	-11.4	-3.7	-5.9	-12.6	-15.8

Source: KOF, ETH Zurich and FGV IBRE



Period	<i>Global Coincident Barometer</i> Vintages		<i>Global Leading Barometer</i> Vintages	
	<i>April 2023</i>	<i>March 2023</i>	<i>April 2023</i>	<i>March 2023</i>
Apr-22	102.0	101.9	83.9	84.1
May-22	94.8	94.8	86.2	86.4
Jun-22	92.6	92.6	86.2	86.2
Jul-22	92.1	91.9	85.6	85.6
Aug-22	88.8	88.7	81.7	81.7
Sep-22	87.5	87.5	85.6	85.7
Oct-22	90.1	90.0	85.6	85.6
Nov-22	84.0	84.0	83.4	83.4
Dec-22	79.9	79.9	81.1	81.0
Jan-23	77.0	77.0	79.1	79.0
Feb-23	83.1	83.3	90.4	90.2
Mar-23	85.7	85.9	95.6	95.6
Apr-23	85.2		94.5	

Source: KOF, ETH Zurich and FGV IBRE

*The Global Barometer series are revised monthly to reflect updates in the component series and revision of the seasonal adjustment.

The Global Economic Barometers

The Global Economic Barometers are a system of indicators enabling timely analysis of global economic development. They represent a collaboration between the KOF Swiss Economic Institute of the ETH Zurich in Switzerland and Fundação Getulio Vargas (FGV), based in Rio de Janeiro, Brazil. The system consists of two composite indicators, the Coincident Barometer and the Leading Barometer. The Coincident Barometer reflects the current state of economic activity, while the Leading Barometer provides a cyclical signal roughly six months ahead of current economic developments.

The two Barometers comprise the results of economic tendency surveys conducted in more than 50 countries with the aim of achieving the broadest possible global coverage. The advantages of economic tendency surveys are that their results are usually readily available and are not substantially revised after first publication.

The Coincident Barometer includes more than 1,000 different time series, while the Leading Barometer consists of over 600 time series. Cross-correlation analysis is used to decide which individual time series are included in the barometers. This involves correlating the individual time series with a reference series. The reference series used is the year-on-year growth rate of global gross domestic product (GDP), in which individual national GDPs are aggregated at purchasing power parity to form global GDP. A time series is only included in a Barometer if it shows a sufficiently high correlation and a suitable synchronization or lead with the reference series.

The series of the two Barometers are revised each month at publication and are standardized to have a mean of 100 and a standard deviation of 10 for the 10-year period previous to the most recent observations. The coefficients of the component series of the Global Barometers have remained stable since the April 2020 edition.

<https://kof.ethz.ch/prognosen-indikatoren/indikatore/kof-globalbaro.html> →

The Global Barometers methodology is described in Klaus Abberger, Michael Graff, Aloisio Campelo Jr, Anna Carolina Lemos Gouveia, Oliver Müller and Jan-Egbert Sturm (2020), The Global Economic Barometers: Composite indicators for the world economy. KOF Working Papers, vol. 471, Zurich: KOF Swiss Economic Institute, ETH Zurich, 2020.

KOF Swiss Economic Institute: Corporate Communications | Phone +41 44 633 99 48 | kofcc@kof.ethz.ch