

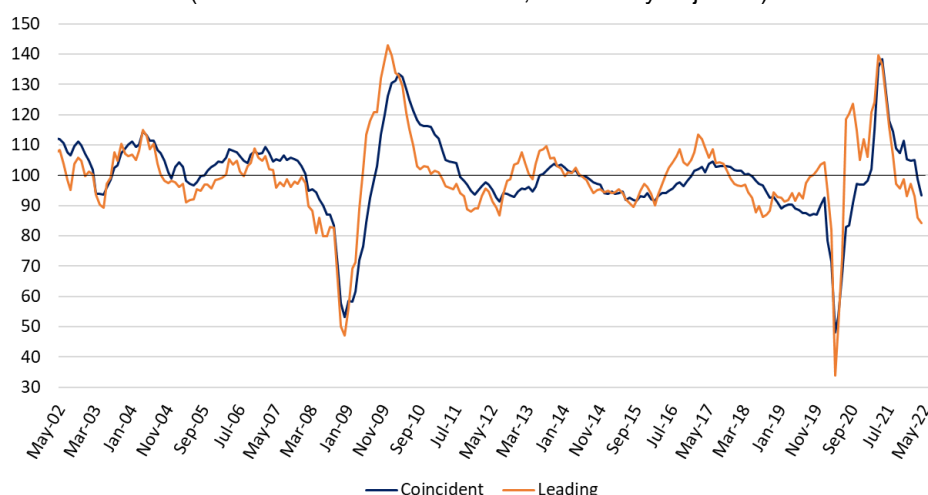
Press Release

Rio de Janeiro and Zurich, May 10, 2022, 10 am (local time) – 1 pm (UTC).

Global Barometers signal world slowdown to intensify in the coming months

The Global Barometers fall for the second consecutive month, reflecting negative factors such as the war between Russia and Ukraine, the COVID-19 responses in China and the worldwide very high inflation. The Coincident Barometer remains below the historical mean of 100 points, while the Leading Barometer drops further from the mean, reflecting the increased risk of a more pronounced slowdown in several countries.

Global Economic Barometers: Coincident vs Leading
(Mean Jan/10 to Dec/19 =100, seasonally adjusted)



Source: KOF ETH Zurich and FGV IBRE

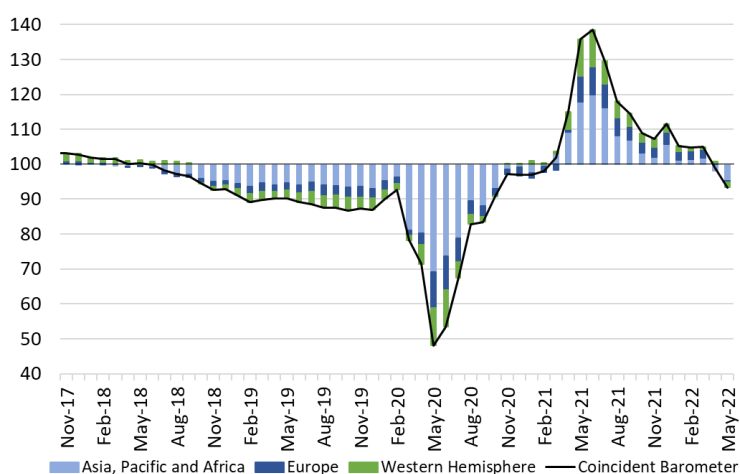
The Coincident Global Economic Barometer falls 5.5 points in May to 93.3 points, the lowest level since October of last year (90.7 pts), while the Leading Global Economic Barometer decreases 1.9 points, to 84.2 points, the lowest level since July 2020 (72.9 pts). This month's results are influenced mainly by the *Asia, Pacific, and Africa* region followed by the *Western Hemisphere*.

“At the beginning of 2022, there was an expectation of a slowdown in the prices of inputs, even with the resumption of economic activity. This expectation has been frustrated in recent months in the context of new challenges in the supply chain, dispelling the perception of transitory inflationary shocks. In addition, the monetary policy reactions of the main economies around the world signal a slowdown in the level of activities, negatively impacting the global barometers.”, evaluates Paulo Picchetti, researcher of FGV IBRE.

Coincident Barometer – regions and sectors

In May, the three regional coincident indicators decrease. The *Asia, Pacific, and Africa* region negatively contributes 2.9 points (53%) to the fall in the Coincident Global Barometer. The indicators for *Europe* and the *Western Hemisphere* contribute 1.8 and 0.8 points (33% and 15%) respectively to this decline. The second consecutive drop in all three regional indicators confirms the increased scepticism regarding world economic growth in the face of the responses to pandemic developments in China, the Russia-Ukraine war, and the high levels of inflation in various countries around the world. The graph below illustrates the contribution of each region to the deviation of the Coincident Barometer from the historical mean of 100 points.

Regional Contributions to the Coincident Global Economic Barometer

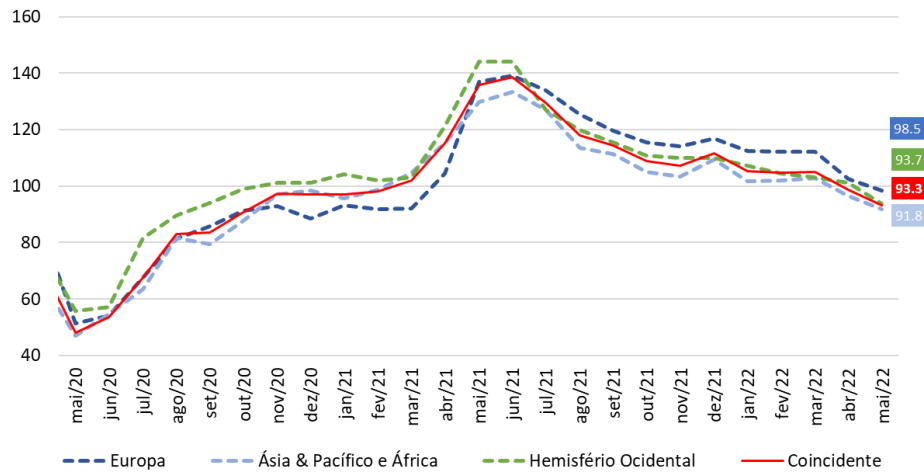


Source: KOF ETH Zurich and FGV IBRE

Regional Contributions to Changes in the Coincident Barometer				
Period	Contributions per Regions			Monthly Variation
	Asia, Pacific and Africa	Europe	Western Hemisphere	Coincident Barometer
Worst pandemic moment: Cum. Contrib. Mar/20-May/20	-27.2	-8.3	-9.2	-44.7
Cum. Contrib. Jun/20-Apr/21	33.9	8.5	11.5	53.9
May-21	8.7	6.6	5.5	20.8
Jun-21	2.2	0.4	0.0	2.6
Jul-21	-3.8	-1.1	-4.1	-9.0
Aug-21	-8.1	-1.7	-1.7	-11.5
Sep-21	-1.3	-1.2	-1.1	-3.5
Oct-21	-3.7	-0.9	-1.1	-5.6
Nov-21	-1.1	-0.3	-0.2	-1.6
Dec-21	3.7	0.5	0.0	4.2
Jan-22	-4.7	-0.9	-0.7	-6.3
Feb-22	0.2	0.0	-0.6	-0.4
Mar-22	0.5	0.0	-0.3	0.2
Apr-22	-3.8	-1.9	-0.5	-6.2
May-22	-2.9	-0.8	-1.8	-5.5
Cum. Contrib. May/21-May/22	-13.9	-1.2	-6.6	-21.7
Cum. Contrib. Mar/20-May/22	-7.2	-1.0	-4.3	-12.5

Source: KOF ETH Zurich and FGV IBRE

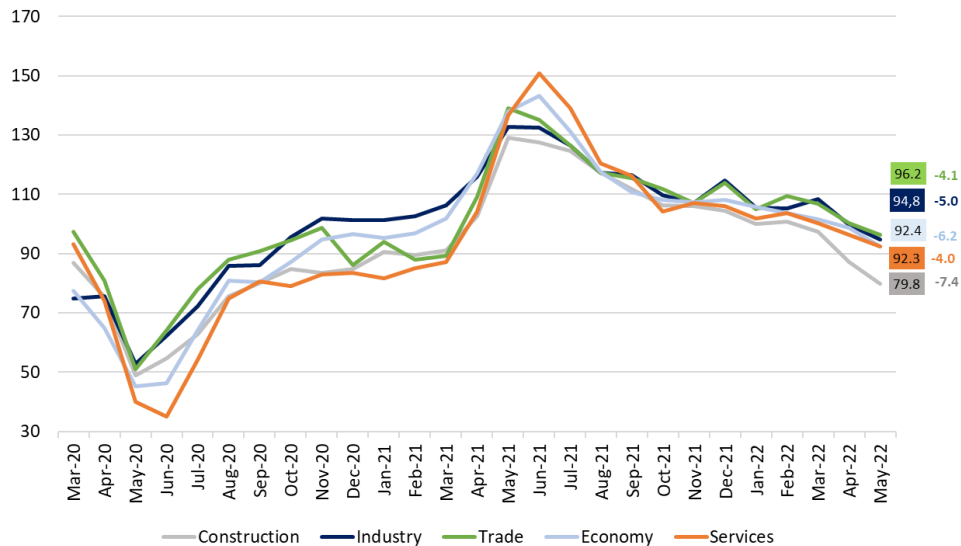
Coincident Global Barometers – Regions



Source: KOF ETH Zurich and FGV IBRE

All coincident sector indicators clearly decrease this month. The largest falls come from *Construction* and the general state of the *Economy* (aggregated business and consumer evaluations), followed by *Industry*, *Services* and *Trade*. With this result, all five sector indicators are now below their historical mean of 100 points.

Coincident Global Barometers – Sectors

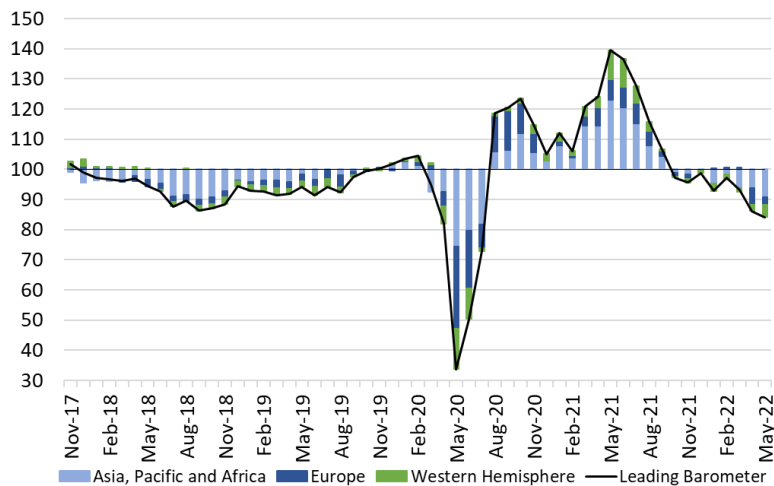


Source: KOF ETH Zurich and FGV IBRE

Leading Barometer – regions and sectors

The Leading Global Barometer leads the world economic growth rate cycle by three to six months on average. In May, the *Asia, Pacific, and Africa* region and the *Western Hemisphere* contribute negatively to the result of the global indicator, with -3.2 and -1.9 points, respectively, while *Europe* moves in the opposite direction with a positive contribution of 3.2 points. The result suggests that growth expectations for the coming months have been strongly revised in the first two regions, due to the COVID-19 responses in China and possibly because of the more restrictive monetary policy in the United States to contain the advance of inflation. The regional indicator for *Europe* recovers half of its losses in the previous month due to the outbreak of the war between Russia and Ukraine.

Regional Contributions to the Leading Global Economic Barometer

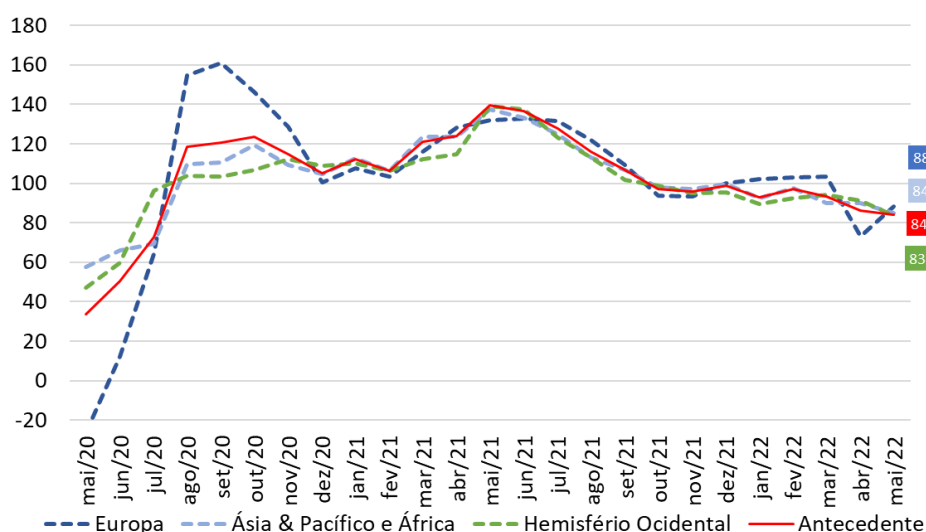


Source: KOF ETH Zurich and FGV IBRE

Regional Contributions to Changes in the Leading Barometer				
Period	Contributions per Regions			Monthly Variation
	Asia, Pacific and Africa	Europe	Western Hemisphere	Leading Barometer
Worst pandemic moment: Cum. Contrib. Mar/20-May/20	-27.0	-28.5	-15.1	-70.6
Cum. Contrib. Jun/20-Apr/21	40.1	30.6	16.3	87.0
May-21	8.6	0.8	6.0	15.4
Jun-21	-2.7	0.2	-0.5	-2.9
Jul-21	-5.1	-0.3	-3.5	-9.0
Aug-21	-7.3	-2.0	-2.5	-11.7
Sep-21	-3.7	-2.7	-2.8	-9.3
Oct-21	-5.4	-3.3	-0.7	-9.4
Nov-21	-0.7	0.0	-1.0	-1.6
Dec-21	1.6	1.4	0.2	3.1
Jan-22	-4.5	0.4	-1.5	-5.7
Feb-22	3.1	0.2	0.8	4.1
Mar-22	-4.5	0.1	0.4	-3.9
Apr-22	0.0	-6.3	-0.7	-7.1
May-22	-3.2	3.2	-2.0	-1.9
Cum. Contrib. May/21-May/22	-23.8	-8.3	-7.8	-39.9
Cum. Contrib. Mar/20-May/22	-10.7	-6.2	-6.6	-23.5

Source: KOF ETH Zurich and FGV IBRE

Leading Global Barometers – Regions

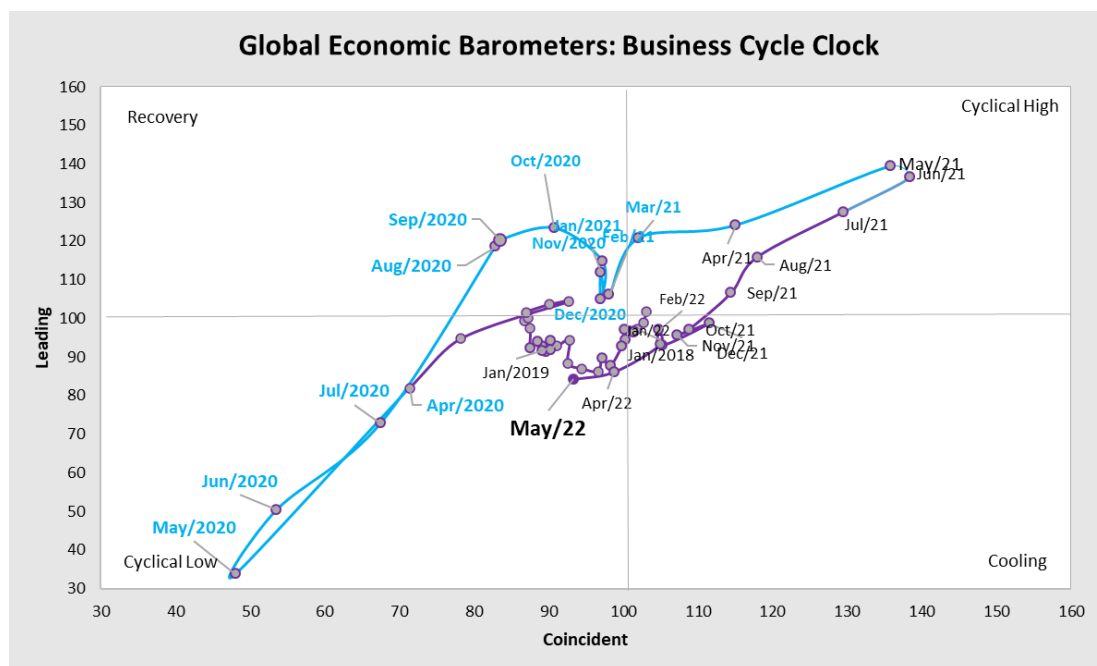


Source: KOF ETH Zurich and FGV IBRE

In May 2022, there is a fall in three of the five Leading indicator sectors. The largest fall comes from the indicator for the general state of the *Economy* (aggregated business and consumer evaluations), followed by *Services* and *Industry*. In the opposite direction, *Construction* rises more than 6 points and *Trade* shows a slight increase for the month. The result suggests that global worsening of inflation is cause for concern among consumers and business, in addition to the existing problems in industrial supply chains in various countries, which are being extended by the conflict in Europe and the reactions to pandemic developments in China.

Sectoral Leading Indicators					
Period	Construction	Economy	Industry	Trade	Services
Feb-20	96.6	106.2	103.6	105.2	107.9
Mar-20	104.8	90.4	93.1	102.6	105.7
Apr-20	90.5	81.5	87.3	65.8	69.7
May-20	54.0	49.1	34.4	30.4	0.7
Worst pandemic moment: Cum. Variation. Mar/20-May/20					
	-42.6	-57.1	-69.2	-74.8	-107.2
Cum. Variation. Jun/20-Apr/21					
	58.7	76.4	86.6	77.7	110.1
May-21	134.5	126.0	142.4	144.5	143.2
Jun-21	130.7	127.1	137.5	135.4	148.2
Jul-21	132.8	122.3	124.6	127.1	142.1
Aug-21	118.8	114.1	113.9	110.8	126.0
Sep-21	111.2	99.4	106.1	109.4	123.7
Oct-21	100.2	90.2	98.1	106.4	105.7
Nov-21	98.4	90.8	94.6	103.5	110.8
Dec-21	104.2	94.2	96.7	111.2	108.7
Jan-22	94.1	91.2	91.9	100.0	103.7
Feb-22	93.1	98.3	96.3	100.4	101.0
Mar-22	86.1	91.9	96.3	90.1	94.3
Apr-22	87.4	82.2	86.7	91.1	99.9
May-22	94.2	76.7	85.2	91.5	96.9
Cum. Variation. May/21-May/22					
	-25.3	-43.3	-34.3	-17.0	-10.9
Cum. Variatiom. Mar/20-May/22					
	-2.4	-29.5	-18.3	-13.7	-11.0

Source: KOF ETH Zurich and FGV IBRE



Period	<i>Global Coincident Barometer</i> Vintages		<i>Global Leading Barometer</i> Vintages	
	May 2022	April 2022	May 2022	April 2022
May-21	115.1	115.4	124.1	123.9
Jun-21	135.9	136.1	139.5	139.5
Jul-21	138.5	138.5	136.6	136.3
Aug-21	129.5	128.6	127.6	125.2
Sep-21	118.0	118.3	115.9	114.0
Oct-21	114.5	114.5	106.6	106.0
Nov-21	108.9	108.8	97.2	98.2
Dec-21	107.3	107.2	95.6	96.4
Jan-22	111.5	110.8	98.7	99.2
Feb-22	105.2	105.1	93.0	92.6
Mar-22	104.8	104.9	97.1	96.6
Apr-22	105.0	105.2	93.2	93.2
May-22	98.8	99.2	86.1	86.9

Source: KOF ETH Zurich and FGV IBRE

* The Global Barometer series are revised monthly to reflect updates in the component series and revision of the seasonal adjustment.

The Global Economic Barometers

The Global Economic Barometers are a system of indicators enabling timely analysis of global economic development. They represent a collaboration between the KOF Swiss Economic Institute of the ETH Zurich in Switzerland and Fundação Getulio Vargas (FGV), based in Rio de Janeiro, Brazil. The system consists of two composite indicators, the Coincident Barometer and the Leading Barometer. The Coincident Barometer reflects the current state of economic activity, while the Leading Barometer provides a cyclical signal roughly six months ahead of current economic developments.

The two Barometers comprise the results of economic tendency surveys conducted in more than 50 countries with the aim of achieving the broadest possible global coverage. The advantages of economic tendency surveys are that their results are usually readily available and are not substantially revised after first publication.

The Coincident Barometer includes more than 1,000 different time series, while the Leading Barometer consists of over 600 time series. Cross-correlation analysis is used to decide which individual time series are included in the barometers. This involves correlating the individual time series with a reference series. The reference series used is the year-on-year growth rate of global gross domestic product (GDP), in which individual national GDPs are aggregated at purchasing power parity to form global GDP. A time series is only included in a Barometer if it shows a sufficiently high correlation and a suitable synchronization or lead with the reference series.

The series of the two Barometers are revised each month at publication and are standardized to have a mean of 100 and a standard deviation of 10 for the 10-year period previous to the most recent observations. The coefficients of the component series of the Global Barometers have remained stable since the April 2020 edition.

More information on the Global Economic Barometers is available on the KOF website:

<https://kof.ethz.ch/prognosen-indikatoren/indikatore/kof-globalbaro.html> →

The Global Barometers methodology is described in Klaus Abberger, Michael Graff, Aloisio Campelo Jr, Anna Carolina Lemos Gouveia, Oliver Müller and Jan-Egbert Sturm (2020), The Global Economic Barometers: Composite indicators for the world economy. KOF Working Papers, vol. 471, Zurich: KOF Swiss Economic Institute, ETH Zurich, 2020. An updated version is published under <https://www.doi.org/10.1007/s10290-021-00449-8>.

KOF Swiss Economic Institute: Corporate Communications | Phone +41 44 633 99 48 | kofcc@kof.ethz.ch